



---

MEETINGS AND EVENTS

---

*The Chelsea*  
**Townhouse**



## IN THE HEART OF CHELSEA

### SLOANE STREET

Chelsea and the surrounding areas of Knightsbridge and Belgravia offer some of the world's leading shopping experiences. Running in a stately straight line from Knightsbridge to Sloane Square is the elegant Sloane Street, lined with world-renowned luxury boutiques and just a stone's throw away from the hotel.

- 0.2 miles from 11 Cadogan Gardens & The Chelsea Townhouse
- 4 minute walk



### SLOANE SQUARE

One of the city's most glamorous locations at the intersection of Sloane Street and Kings Road, Sloane Square is the perfect destination for shopping, culture and dining.

- 0.2 miles from 11 Cadogan Gardens & The Chelsea Townhouse
- 4 minute walk

### CADOGAN GARDENS

Hidden from the city's hustle and bustle in a tranquil and residential corner sits our uniquely boutique hotel. With The Chelsea Townhouse opening on to Cadogan Gardens, we sometimes forget that our quiet neighbourhood setting is just a few moments from some of London's most visited attractions.

- 243 ft from 11 Cadogan Gardens
- 0 ft from The Chelsea Townhouse
- 1 minute walk



### DUKE OF YORK SQUARE

Home to one of London's best artisan food markets and the iconic Saatchi Gallery, Duke of York Square is an elegant, historic destination and the perfect place to enjoy retail or beauty therapy, alfresco dining or a spot of contemporary culture.

- 0.2 miles from 11 Cadogan Gardens & The Chelsea Townhouse
- 4 minute walk



### PAVILION ROAD

Step out of our restaurant, Hans' Bar & Grill, to discover Pavilion Road, London's longest mews. Lined with Victorian era stable blocks, the road is now a picturesque haven for independent and artisan food, beauty and fashion stores. It is also completely pedestrianized and has become home to several restaurants and bars, offering alfresco dining.

- 0.2 miles from 11 Cadogan Gardens & The Chelsea Townhouse
- 5 minute walk

CONTENTS



THE CURIO  
PAGE 10-11



THE WINE ROOM  
PAGE 14-15



THE LIBRARY  
PAGE 16-17



THE CHELSEA BAR  
PAGE 18-19



THE CONSERVATORY  
PAGE 20-21



THE MIRROR ROOM  
PAGE 22-23



THE SECRET GARDEN  
PAGE 24-25



HANS' BAR & GRILL  
PAGE 26-27



MULBERRY  
PAGE 34-35



THE FRONT ROOM  
PAGE 36-37



EXCLUSIVE USE  
PAGE 38-39

*The Chelsea*  
Townhouse

# MEETING ROOM CAPACITIES AND DIMENSIONS



	The Curio	Curio Lounge	The Conservatory	The Secret Garden	The Library	The Chelsea Bar	Mirror Room	Wine Room	Hans' Bar & Grill
Area (square metres)	27.5	12.5	9.12	22.5	24	63	17	23.75	-
Boardroom	16	-	-	-	-	-	-	-	-
Theatre	25	-	-	-	-	-	-	-	-
Existing Seating	-	-	6	16	8	25	4	-	-
Standing	25	10	-	20	16	50	16	-	150
Dining	16	-	6	-	-	-	8	24	106
Layout	Boardroom/ dining room theatre	Lounge	Round table	-	Lounge	Lounge		Long tables	-



	Mulberry	The Front Room
Area (square metres)	27	12
Boardroom	14	-
Theatre	-	-
Existing Seating	14	8
Standing	-	13
Dining	14	-
Layout	Boardroom/ Dining Room	Lounge



# 11 CADOGAN GARDENS CHELSEA

## EXPERIENCE THE HEART OF CHELSEA

---

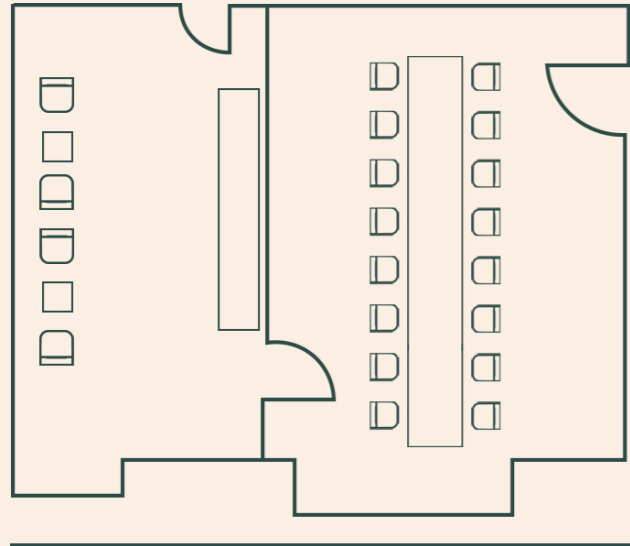
This most desirable address is where the great and good have been meeting, celebrating, and relaxing for over a century. Now it's your turn to enjoy all things Chelsea and immerse yourself in the relaxed village atmosphere of this beautiful and historic corner of the capital.

Our 5-star luxury hotel with its quirky twists and playful boutique vibe is the first Relais & Châteaux hotel member in London and offers the finest of the city's culture right on the doorstep.

To stay at 11 Cadogan Gardens is to experience the spirit of Chelsea.

CURIO LOUNGE

THE CURIO



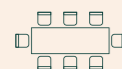
CADOGAN GARDENS

## THE CURIO

PRIVATE

The stunning Curio Room benefits from natural daylight and its own private off-street entrance. It is an ideal room for a variety of occasions, from business meetings to social dinners. The Curio adjoins to The Curio Lounge, a private and flexible space perfect for pre-dinner drinks or a break-out room for meetings.

*Perfect for private dining, drink receptions and business meetings.*



BOARDROOM

16



THEATRE

25



LONG DINING

16



STANDING

25





## THE CURIO DAY DELEGATE RATE

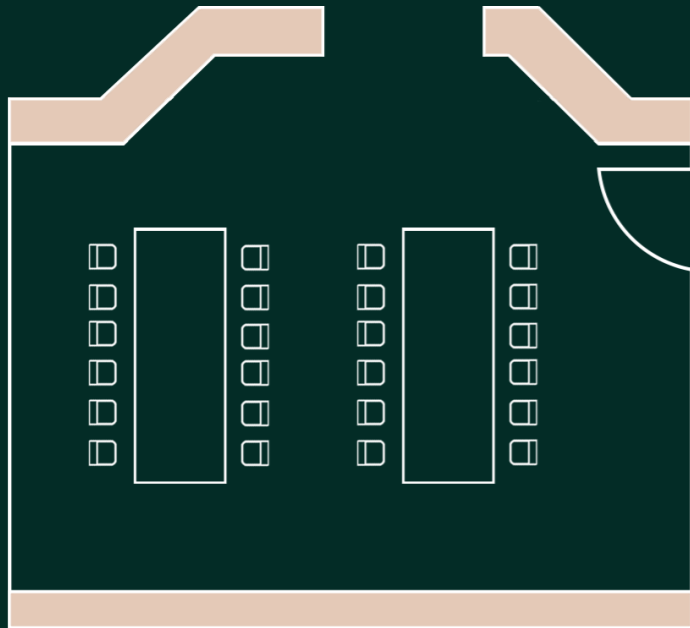
- Capacity: minimum 10, maximum 16
- Price: £125 per person, inc VAT

The Day Delegate Rate includes:

- Full day use of The Curio and The Curio Lounge
- Full room set up including individual notepads, pens, still and sparkling mineral water
- Complimentary high-speed WiFi
- Audio visual equipment including 52" LED screen
- Three tea and coffee breaks with additional treats
- Buffet working lunch, served in The Curio Lounge
- Dedicated Conference Events Manager
- 20% off available on accommodation

Depending on the client's preference, the working lunch can also be served in the Hans' Bar and Grill.





## THE WINE ROOM

SEMI-PRIVATE

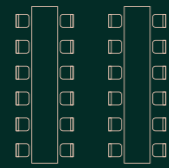
The Wine Room has beautiful glass-fronted wine displays, showcasing an extensive collection. This semi-private dining room sits within Hans' Bar & Grill, allowing you to soak up the buzz of the restaurant whilst enjoying privacy.

*Perfect for private dining, drink receptions and business meetings.*



ONE LONG TABLE

14

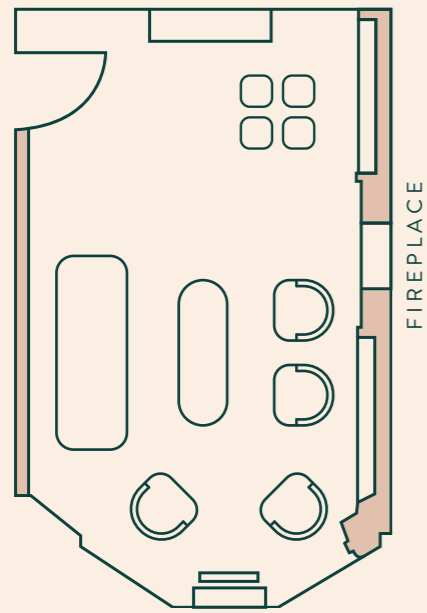


TWO LONG TABLES

12







## THE LIBRARY

PRIVATE

Subtle lighting, plush sofas and historic portraits create a wonderfully relaxed environment to while away the hours undisturbed, whilst enjoying the views over Cadogan Gardens.

*Perfect for intimate gatherings and smaller meetings.*



SEATING

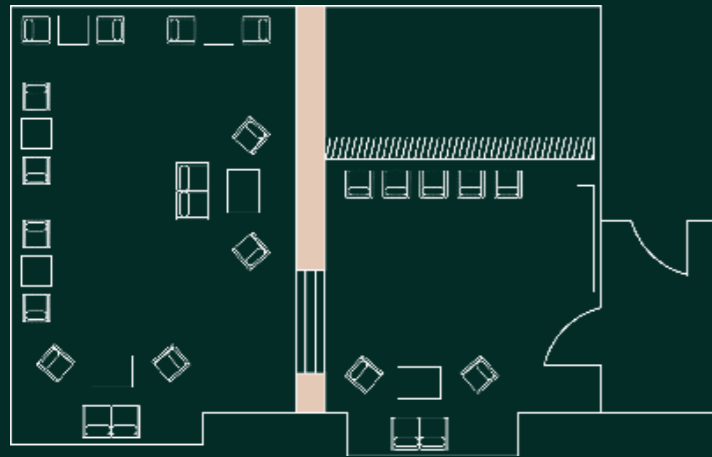
8



STANDING

16





## THE CHELSEA BAR

PRIVATE | SEMI-PRIVATE

Our bar is unashamedly moody and seductive, with a dramatic colour palette of gold and charcoal. It is a theatrical setting in which to kick back, entertain and enjoy the finest cocktails Chelsea has to offer.

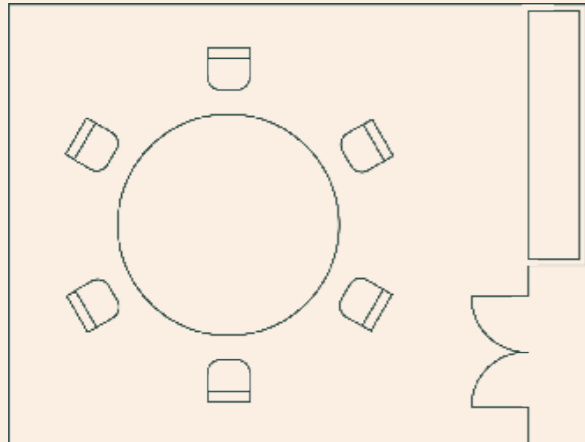
*Perfect for parties and celebrations.*



STANDING

50





## THE CONSERVATORY

SEMI-PRIVATE

A serene environment for an intimate meeting or dinner. The conservatory connects to the drawing room and has access to the secluded outside terrace.

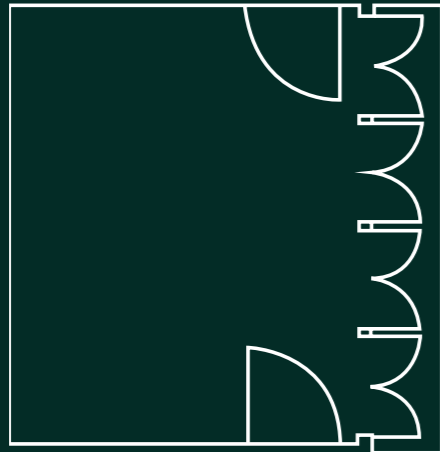
*Perfect for intimate meetings and private dining.*



ROUND TABLE

6





## THE MIRROR ROOM

PRIVATE | SEMI-PRIVATE

The Mirror Room sparkles for every occasion with lashings of gold and a surrounding of mirrors. The room interconnects with two suites which can also be booked exclusively.

*Perfect for small gatherings, drink receptions and private dining.*



LONG DINING

8



ROUND TABLE

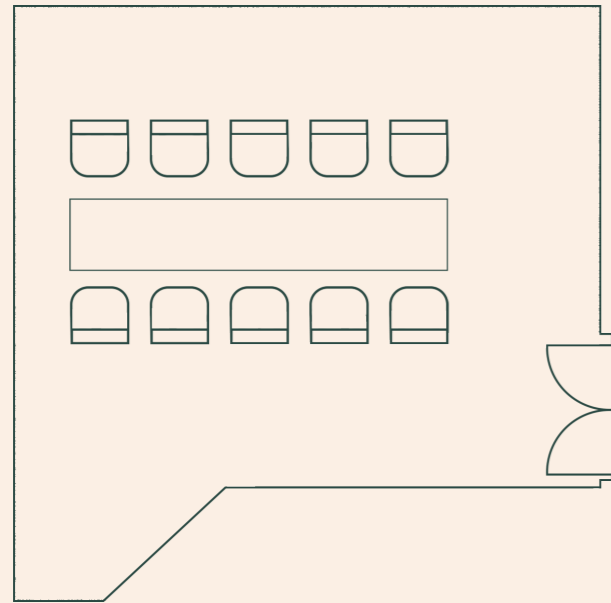
5



STANDING

16





## THE SECRET GARDEN

PRIVATE

The Secret Garden offers a serene oasis away from the hustle and bustle.... Whether you're a planning a drink reception or a private lunch, The Secret Garden is the ultimate destination to unwind and truly relax.

*Perfect for celebrations, private dining and drink receptions.*



LONG DINING

10

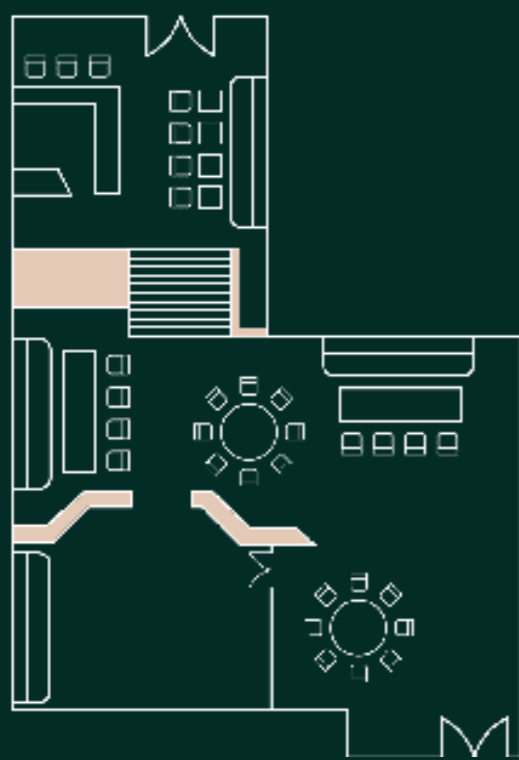


STANDING

20



PAVILION ROAD

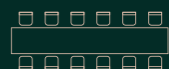


HANS' BAR & GRILL

PRIVATE

Located just a stone's throw from Chelsea's bustling Sloane Square, Hans' Bar & Grill offers an oasis of calm, nestled amongst the artisanal shops and food suppliers of picturesque Pavilion Road. Our food is rooted in British produce and is underpinned by our Head Chef, Antonio Aniello's classical cookery skills. Our café bar and all-day dining restaurant is the perfect place for healthy breakfasts and family brunches, late morning coffees, and early evening cocktails and dinner.

*Perfect for large celebrations and private dining.*



EXISTING SEATING  
106



STANDING  
150



## YOUR PRIVATE SUITE

The perfect, relaxed, informal space for product launches, private meetings, intimate drinks and canapé receptions.



## SLOANE SUITE

The magnificent Sloane Suite is largely furnished with antiques, and offers stunning views over the leafy Cadogan Gardens from the large bay windows.

- 20 theatre capacity
- 30 reception capacity

## CADOGAN SUITE

Two of the Cadogan Suites are located in the main house and have garden views. The other four are situated in the mews building, originally a stable house, which overlooks Pavilion Road.

- 6 reception capacity



## APARTMENTS

Located a stone's throw from the hotel, across the leafy and private garden square, sit The Apartments by 11 Cadogan Gardens. Six newly renovated apartments each comprising an entire floor of a terracotta brick Victorian townhouse, providing luxe-contemporary spaces.

- 14 reception capacity



ACCOMMODATION

SUITES: SIGNATURE | JUNIOR

ROOMS AVAILABLE: 56, INCLUDING 22 SUITES

APARTMENTS: 6



Room discount is available if you host  
an event with us.





## *The Chelsea* Townhouse

### EXPERIENCE THE HEART OF CHELSEA

---

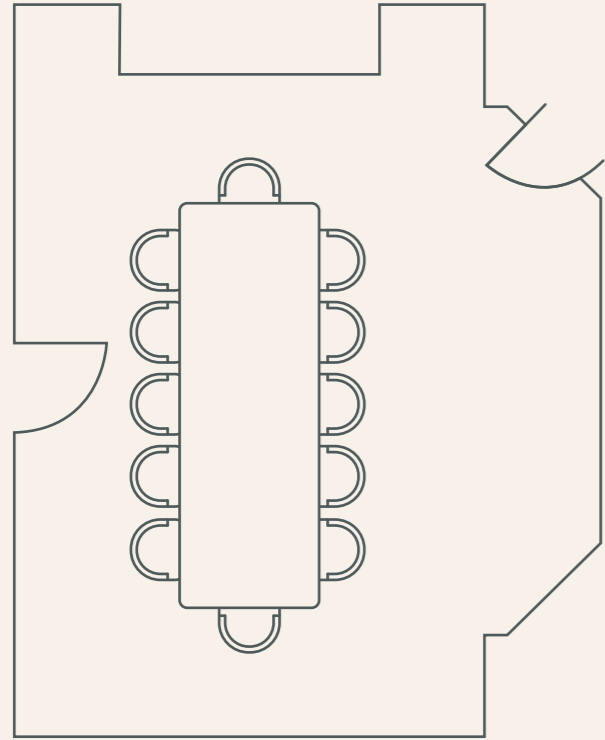
Step into The Chelsea Townhouse, where timeless elegance meets contemporary charm. Situated in the heart of one of London's most prestigious neighbourhoods, our boutique hotel offers the perfect blend of sophistication and comfort.

Housed in a beautifully restored Victorian building, the property is just moments from the iconic King's Road, the stylish boutiques of Pavilion Road, and the serene Cadogan Place Gardens. Each room and suite is thoughtfully designed with luxurious touches, creating a warm and inviting atmosphere that feels like a home away from home.

Our elegant 5-star property is the second Relais & Châteaux hotel member in London and provides the ideal setting to immerse yourself in this historic and charming corner of the city.

Welcome to The Chelsea Townhouse,  
where your Chelsea story begins.

*The Chelsea*  
**Townhouse**



**MULBERRY**

PRIVATE

The Mulberry offers an ideal, intimate setting for small events, from private dining to festive gatherings. This versatile space can be customised to suit your needs, ensuring each detail enhances your experience. With its warm ambiance and elegant decor, The Mulberry provides a memorable backdrop for any occasion. Guests booking this The Mulberry also enjoy direct access to the private Cadogan Gardens.

Perfect for meetings and private dining.



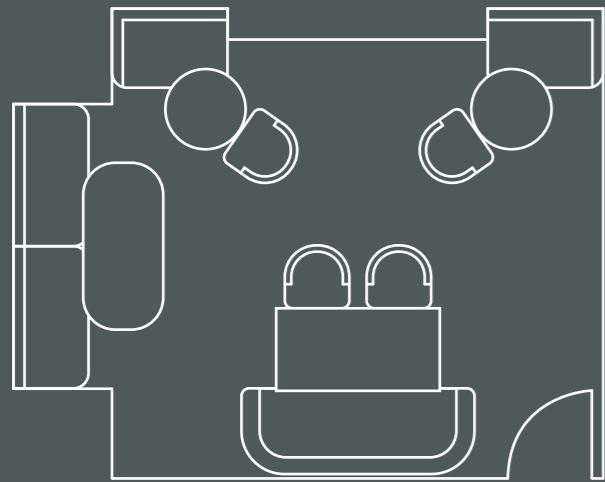
SEATED  
14



STANDING  
20



*The Chelsea*  
Townhouse



THE FRONT ROOM

PRIVATE

The Front Room is a charming event space that combines classic Victorian features with modern touches, creating a warm and inviting setting. With a marble fireplace, intricate crown detailing, and large windows, it's ideal for small gatherings, business meetings, or private celebrations. Filled with natural light and featuring built-in bookshelves and comfortable seating, this room offers a blend of historic character and modern comfort.

Perfect for intimate gatherings and smaller meetings.



SEATED

10



STANDING

14



# *The Chelsea* Townhouse

## EXCLUSIVE USE

PRIVATE

Indulge in the privacy and luxury of exclusive hire at The Chelsea Townhouse, your very own residence in one of London's most prestigious neighbourhoods. Combining timeless elegance with modern sophistication, The Chelsea Townhouse offers a beautifully curated setting with an intimate lounge, a garden room with bar and access to private gardens, an elegant dining room, and versatile spaces perfect for any occasion. Whether for a milestone celebration or a refined corporate gathering, our dedicated team will attend to every detail, ensuring a seamless experience and the option of luxurious overnight stays.

The extra details:

- Exclusivity of three beautiful Victorian townhouses
- Full use of The Garden room and the meeting room
- 36 bedrooms to host your clients and guests, or however many you require
- Alternatively, one townhouse (House 22) can be hired independently for a smaller group of up to 12 bedrooms.
- For pricing and additional information, please inquire directly. A minimum spend on food and beverages is required for exclusive bookings.





# The Chelsea Townhouse

## ACCOMMODATION

SUITES: 11

ROOMS AVAILABLE: 36



Room discount is available if you host  
an event with us.



11 Cadogan Gardens  
Chelsea  
London SW3 2RJ  
United Kingdom

Tel: +44 (0)20 7730 7000  
E: [reservations@11cadogangardens.com](mailto:reservations@11cadogangardens.com)

---

*The Chelsea*  
**Townhouse**

26 Cadogan Gardens  
Chelsea  
London SW3 2RP  
United Kingdom

Tel: +44 (0)20 7730 6466  
E: [reservations@thechelseatownhouse.com](mailto:reservations@thechelseatownhouse.com)

